



UNCOMPAHGRE PLATEAU COLLABORATIVE FOREST RESTORATION PROJECT





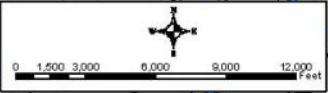
SUCCESSSES

1) Start with a Good Project

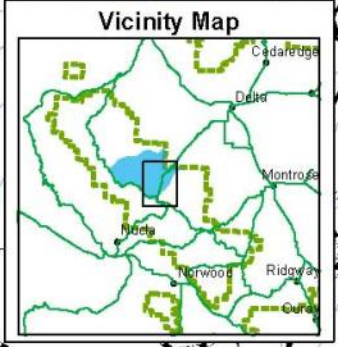
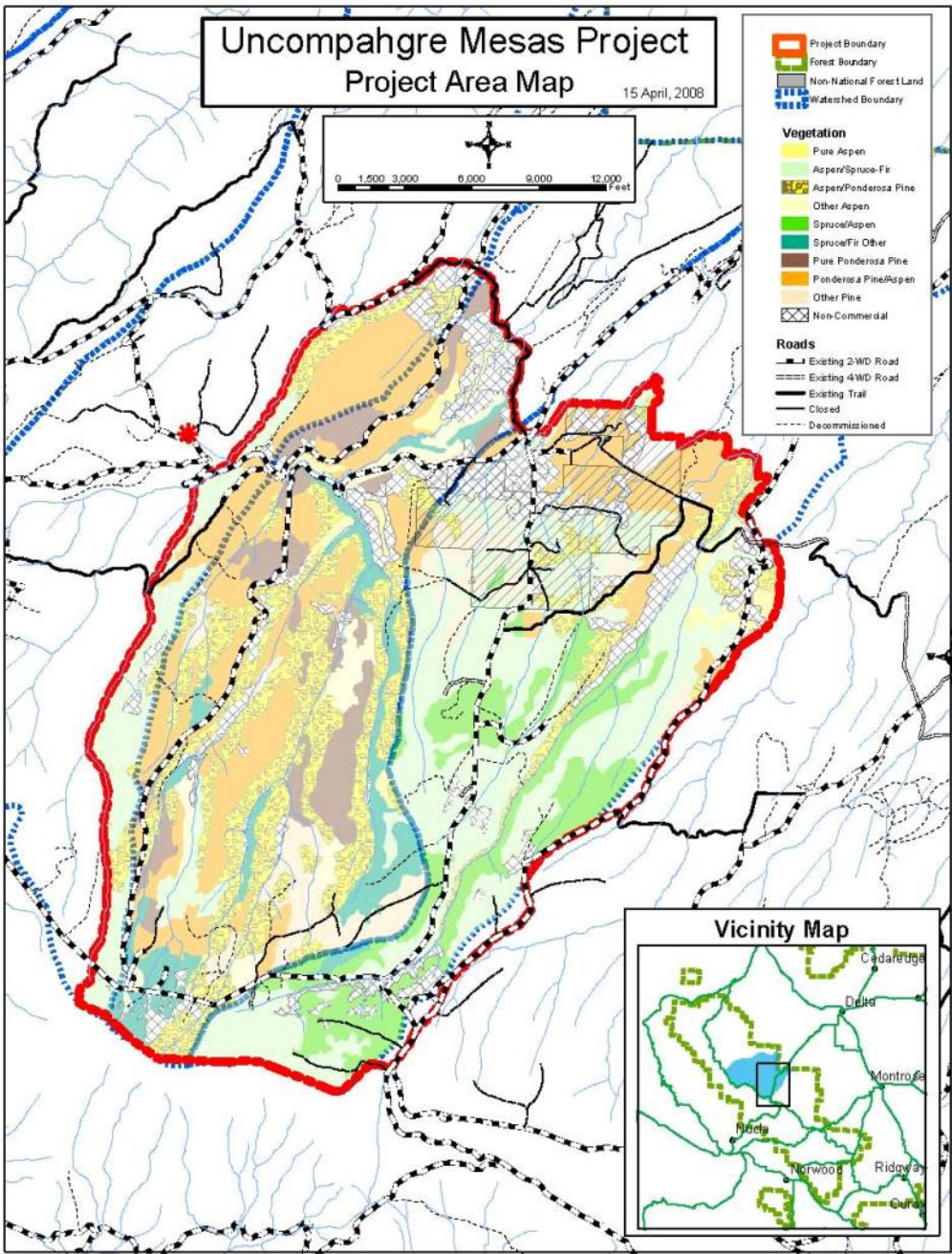


Uncompahgre Mesas Project Project Area Map

15 April, 2008



- Project Boundary
 - Forest Boundary
 - Non-National Forest Land
 - Watershed Boundary
- Vegetation**
- Pure Aspen
 - Aspen/Spruce-Fir
 - Aspen/Ponderosa Pine
 - Other Aspen
 - Spruce/Aspen
 - Spruce/Fir Other
 - Pure Ponderosa Pine
 - Ponderosa Pine/Aspen
 - Other Pine
 - Non-Commercial
- Roads**
- Existing 2WD Road
 - Existing 4WD Road
 - Existing Trail
 - Closed
 - Decommissioned





2) Get out on the Ground

Field Trips, Campouts, Cookouts and
Campfires

Bringing Diverse Interests Together





Keep people
engaged
and
having fun!





3) Have an Independent Facilitator

- The Uncompahgre Partnership

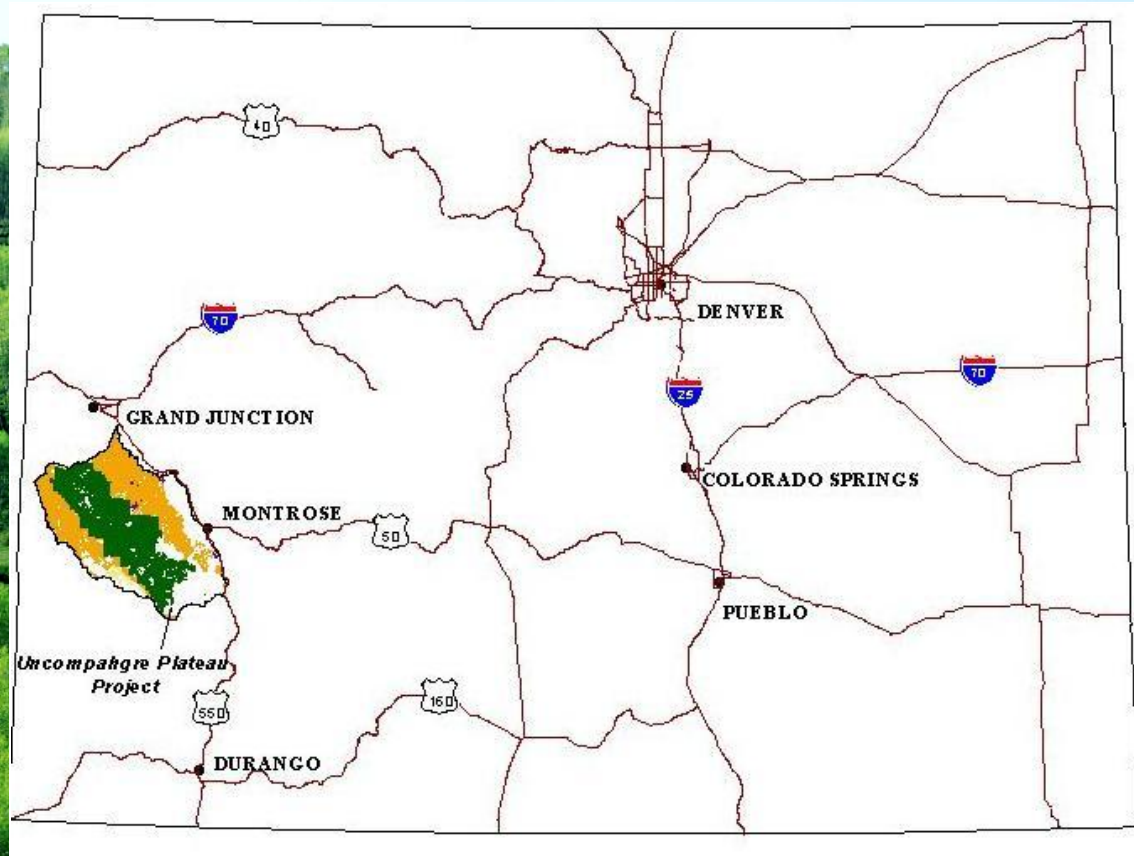
Pam Motley's great grilling



4) Be Inclusive – Have the Right Team



Uncompahgre Plateau



**5) Have a place-based focus
with place –based people**

6) Trust in the Process - Collaborative Problem Solving



“Restoration Principles”

Building the Side Boards
for an Adaptive NEPA Document



7) Focus on Facts - Bringing in the Scientists



Basic, general ecology of forests like those of the UP is known fairly well.

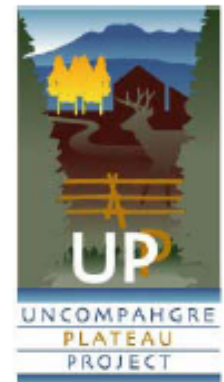
But many local details are also important.

UPP and CFRI collaborated to determine the local details – what did the forests of the UP look like before EuroAmerican settlement (say, 1875)?

Historical Forest Structure on the Uncompahgre Plateau: Informing restoration prescriptions for mountainside stewardship

Prepared by the Colorado Forest Restoration Institute,
Colorado State University, Ft Collins, CO 80523
August 2008

Contacts: Dan Binkley (dan@cnr.colostate.edu), Bill Romme (romme@cnr.colostate.edu), Tony Cheng (chengt@cnr.colostate.edu)





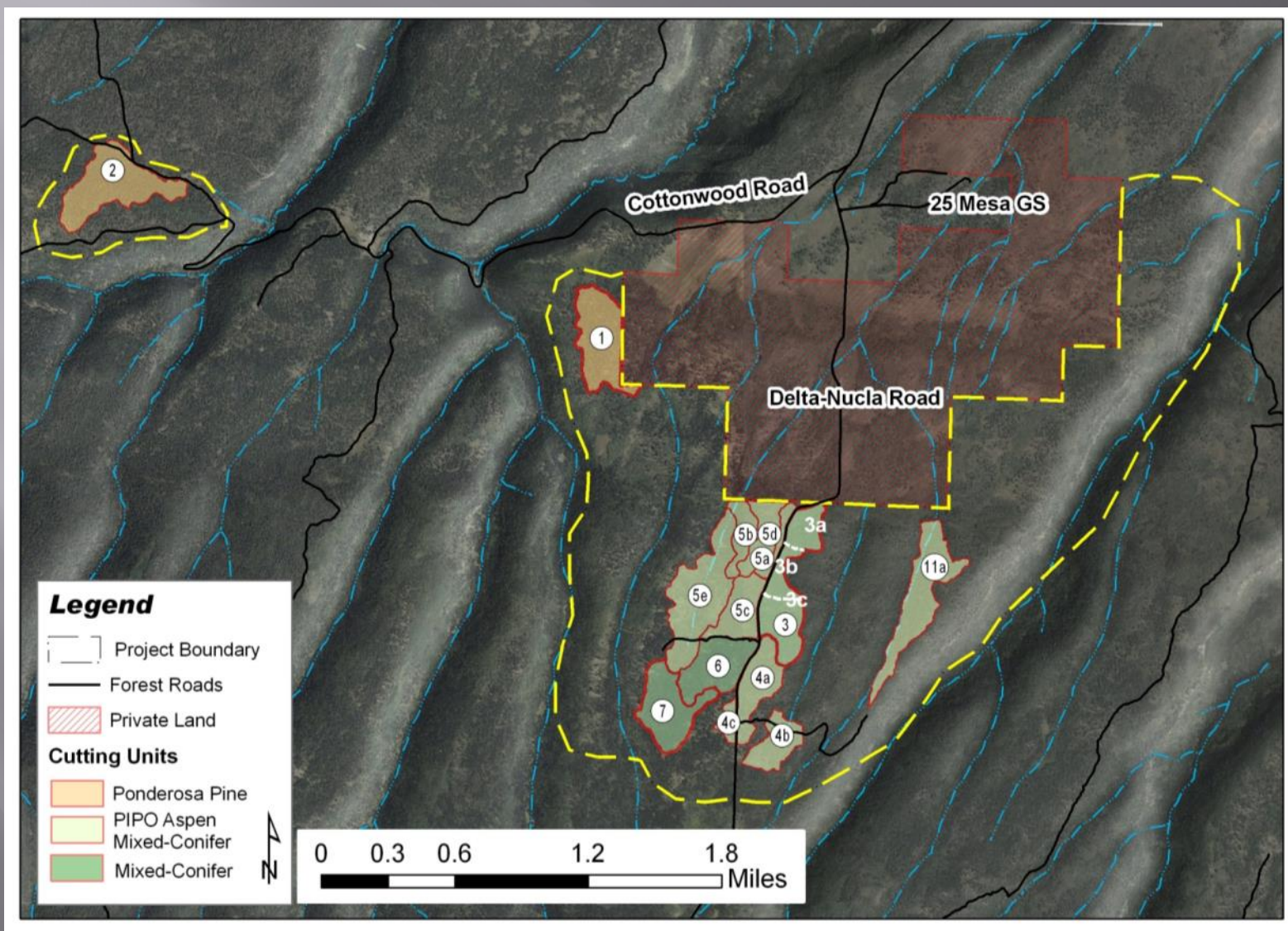
BUY IN



8) Choose your Collaboration Wisely



9) Balance Thought and Action





10) Find the Balance Between 'Best Case' and 'What is Do-able'



A green forestry harvester is shown in a snowy forest, actively cutting a tree. The machine is positioned on the right side of the frame, with its long boom extending towards the center. The forest is dense with evergreen trees, and the ground is covered in snow. The harvester's arm is positioned to cut a tree trunk, and a cloud of sawdust is visible around the cutting point. The overall scene depicts a winter logging operation.

CHALLENGES/ EMERGING ISSUES

1) Capacity in the Agency



2) Capacity of the Collaborators

3) Lack of Biomass Markets



4) Climate Change



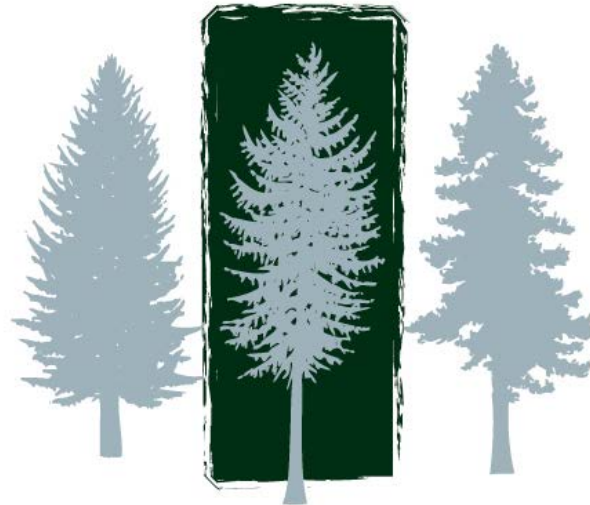


5) Forest Health vs. Ecological Restoration



www.UPLandscape.org

**THE UNCOMPAHGRE
PLATEAU**



 **COLLABORATIVE
RESTORATION PROJECT**